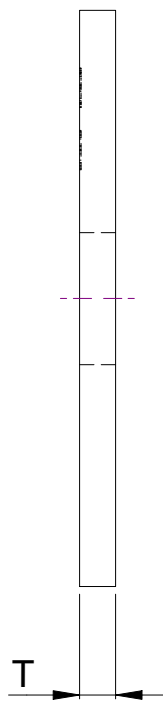
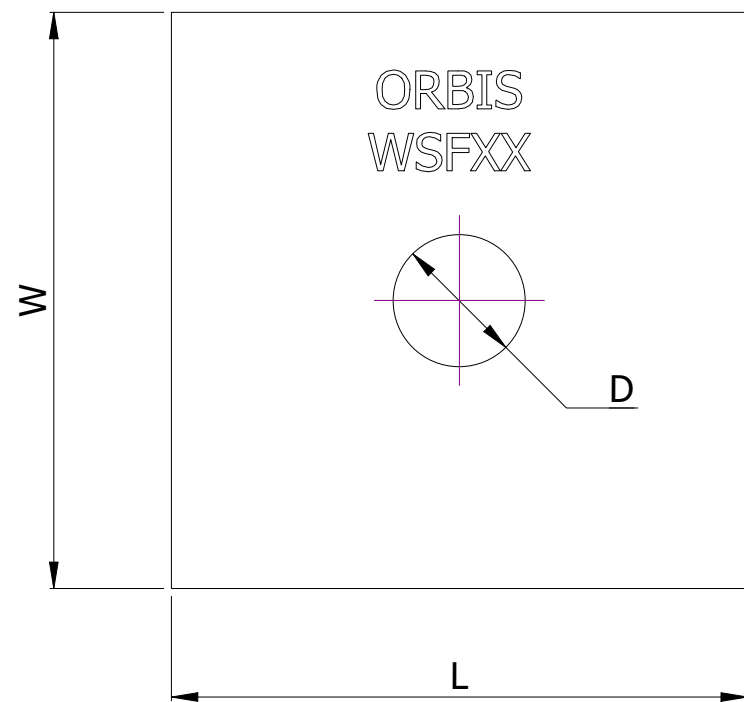


SR NO	STAMP CODE	PART NUMBER	DESCRIPTION	L (INCH)	W (INCH)	D (INCH)	T (INCH)
1	WSF11	WSF3F-1116	WASHER SQUARE FLAT 3" X 3" 11/16" HOLE HDG 3/16" THICKNESS (WRF11)	3	3	11/16	3/16
2	WSF12	WSF3F-1316	WASHER SQUARE FLAT 3" X 3" 13/16" HOLE HDG 3/16" THICKNESS (WRF12)	3	3	13/16	3/16
3	WSF23	WSF3G-916	WASHER SQUARE FLAT 3" X 3" 9/16" HOLE HDG 1/4" THICKNESS (WRF23)	3	3	9/16	1/4
4	WSF24	WSF3G-1116	WASHER SQUARE FLAT 3" X 3" 11/16" HOLE HDG 1/4" THICKNESS (WRF24)	3	3	11/16	1/4
5	WSF25	WSF3G-1316	WASHER SQUARE FLAT 3" X 3" 13/16" HOLE HDG 1/4" THICKNESS (WRF25)	3	3	13/16	1/4
6	WSF26	WSF3G-1516	WASHER SQUARE FLAT 3" X 3" 15/16" HOLE HDG 1/4" THICKNESS (WRF26)	3	3	15/16	1/4
7	WSF27	WSF3G-116	WASHER SQUARE FLAT 3" X 3" 1-1/16" HOLE HDG 1/4" THICKNESS (WRF27)	3	3	1-1/16	1/4
8	WSF37	WSF3H-1516	WASHER SQUARE FLAT 3" X 3" 15/16" HOLE HDG 3/8" THICKNESS (WRF37)	3	3	15/16	3/8
9	WSF28	WSF350G-1116	WASHER SQUARE FLAT 3-1/2" X 3-1/2" 11/16" HOLE HDG 1/4" THICKNESS (WR28)	3-1/2	3-1/2	11/16	1/4
10	WSF29	WSF350G-1316	WASHER SQUARE FLAT 3-1/2" X 3-1/2" 13/16" HOLE HDG 1/4" THICKNESS (WR29)	3-1/2	3-1/2	13/16	1/4
11	WSF30	WSF350G-116	WASHER SQUARE FLAT 3-1/2" X 3-1/2" 1-1/16" HOLE HDG 1/4" THICKNESS (WRF30)	3-1/2	3-1/2	1-1/16	1/4
12	WSF38	WSF350H-1316	WASHER SQUARE FLAT 3-1/2" X 3-1/2" 13/16" HOLE HDG 3/8" THICKNESS (WRF38)	3-1/2	3-1/2	13/16	3/8
13	WSF39	WSF350H-1516	WASHER SQUARE FLAT 3-1/2" X 3-1/2" 15/16" HOLE HDG 3/8" THICKNESS (WRF39)	3-1/2	3-1/2	15/16	3/8



THICKNESS CHART		
FRACTION	DECIMAL	NOMENCLATURE
5/64"	0.07	A
7/64"	0.1	B
1/8"	0.125	C
9/64"	0.14	D
5/32"	0.15	E
3/16	.1875	F
1/4"	.25	G
3/8"	.375	H
7/16"	.4375	I
1/2"	.5	J

NOTES:

- HOT DIP GALVANIZED AS PER ASTM A-153
- MATERIAL - HOT ROLLED STEEL
- ALL MEASUREMENTS IN INCHES.

THIS DRAWING  
CONTAINS  
CONFIDENTIAL  
INFORMATION  
AND IS THE  
EXCLUSIVE  
PROPERTY OF  
ORBIS  
MANUFACTURING

**ORBIS**

DRAWN	MSM	DATE	21-07-2022
APPROVED	DMM	DATE	26-07-2022
REVISION	R1.1		

**DRAWING NUMBER**

WSF3F-XXXX

**DESCRIPTION**

WASHER 3" SQUARE FLAT