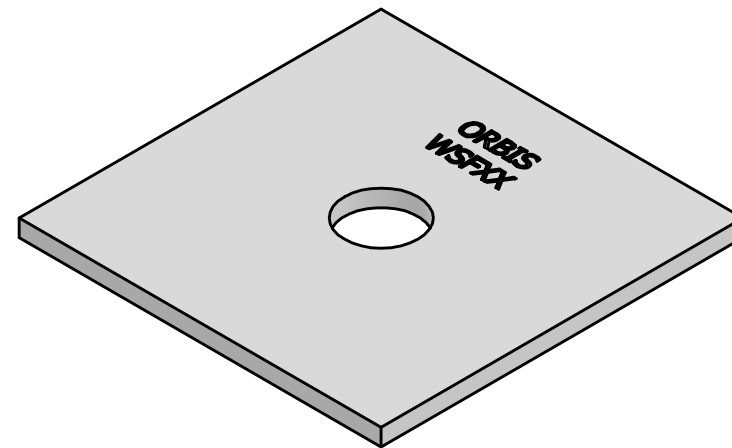
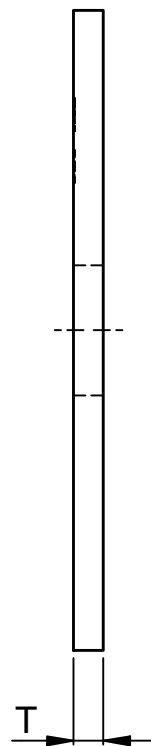
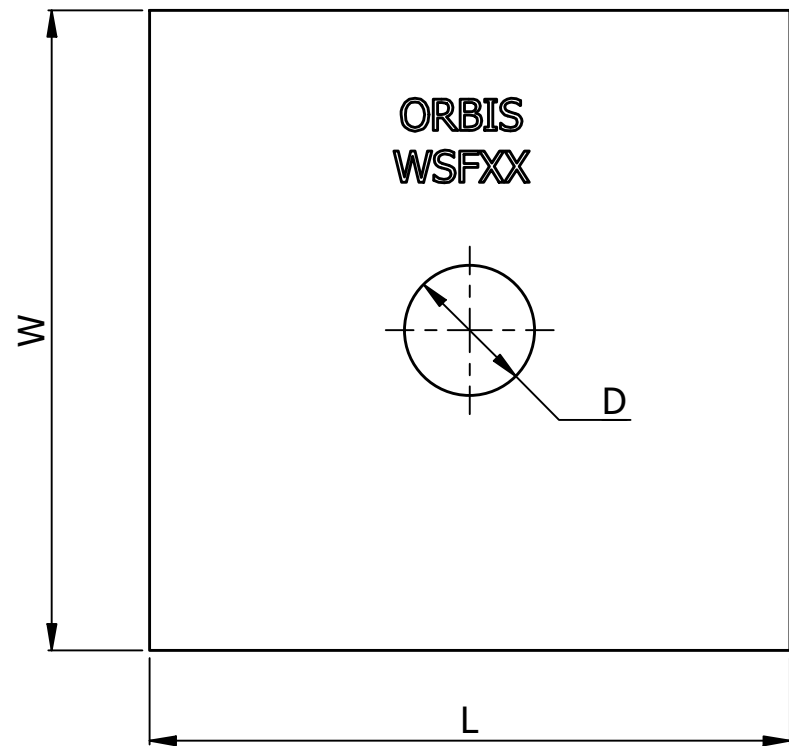


| SR NO | STAMP CODE | PART NUMBER | DESCRIPTION | L (INCH) | W (INCH) | D (INCH) | T (INCH) |
|-------|------------|--------------|--|----------|----------|----------|----------|
| 1 | WSF1 | WSF2C-916 | WASHER SQUARE FLAT 2"X 2" 9/16" HOLE HDG 1/8" THICKNESS (WSF1) | 2 | 2 | 9/16 | 1/8 |
| 2 | WSF2 | WSF2C-1116 | WASHER SQUARE FLAT 2"X 2" 11/16" HOLE HDG 1/8" THICKNESS (WSF2) | 2 | 2 | 11/16 | 1/8 |
| 3 | WSF3 | WSF2C-1316 | WASHER SQUARE FLAT 2"X 2" 13/16" HOLE HDG 1/8" THICKNESS (WSF3) | 2 | 2 | 13/16 | 1/8 |
| 4 | WSF5 | WSF2F-916 | WASHER SQUARE FLAT 2"X 2" 9/16" HOLE HDG 3/16" THICKNESS (WSF5) | 2 | 2 | 9/16 | 3/16 |
| 5 | WSF6 | WSF2F-1116 | WASHER SQUARE FLAT 2"X 2" 11/16" HOLE HDG 3/16" THICKNESS (WSF6) | 2 | 2 | 11/16 | 3/16 |
| 6 | WSF7 | WSF2F-1316 | WASHER SQUARE FLAT 2"X 2" 13/16" HOLE HDG 3/16" THICKNESS (WSF7) | 2 | 2 | 13/16 | 3/16 |
| 7 | WSF15 | WSF2G-916 | WASHER SQUARE FLAT 2" X 2" 9/16" HOLE HDG 1/4" THICKNESS (WSF15) | 2 | 2 | 9/16 | 1/4 |
| 8 | WSF16 | WSF2G-1116 | WASHER SQUARE FLAT 2" X 2" 11/16" HOLE HDG 1/4" THICKNESS (WSF16) | 2 | 2 | 11/16 | 1/4 |
| 9 | WSF17 | WSF2G-1316 | WASHER SQUARE FLAT 2" X 2" 13/16" HOLE HDG 1/4" THICKNESS (WSF17) | 2 | 2 | 13/16 | 1/4 |
| 10 | WSF8 | WSF225F-916 | WASHER SQUARE FLAT 2-1/4" X 2-1/4" 9/16" HOLE HDG 3/16" THICKNESS (WSF8) | 2-1/4 | 2-1/4 | 9/16 | 3/16 |
| 11 | WSF9 | WSF225F-1116 | WASHER SQUARE FLAT 2-1/4" X 2-1/4" 11/16" HOLE HDG 3/16" THICKNESS (WSF9) | 2-1/4 | 2-1/4 | 11/16 | 3/16 |
| 12 | WSF10 | WSF225F-1316 | WASHER SQUARE FLAT 2-1/4" X 2-1/4" 13/16" HOLE HDG 3/16" THICKNESS (WSF10) | 2-1/4 | 2-1/4 | 13/16 | 3/16 |
| 13 | WSF18 | WSF225G-916 | WASHER SQUARE FLAT 2-1/4" X 2-1/4" 9/16" HOLE HDG 1/4" THICKNESS (WSF18) | 2-1/4 | 2-1/4 | 9/16 | 1/4 |
| 14 | WSF19 | WSF225G-1116 | WASHER SQUARE FLAT 2-1/4" X 2-1/4" 11/16" HOLE HDG 1/4" THICKNESS (WSF19) | 2-1/4 | 2-1/4 | 11/16 | 1/4 |
| 15 | WSF20 | WSF225G-1316 | WASHER SQUARE FLAT 2-1/4" X 2-1/4" 13/16" HOLE HDG 1/4" THICKNESS (WSF20) | 2-1/4 | 2-1/4 | 13/16 | 1/4 |
| 16 | WSF21 | WSF250G-1116 | WASHER SQUARE FLAT 2-1/2 X 2-1/2" 11/16" HOLE HDG 1/4" THICKNESS (WSF21) | 2-1/2 | 2-1/2 | 11/16 | 1/4 |
| 17 | WSF21.5 | WSF250G-1316 | WASHER SQUARE FLAT 2-1/2 X 2-1/2" 13/16" HOLE HDG 1/4" THICKNESS (WSF21.5) | 2-1/2 | 2-1/2 | 13/16 | 1/4 |
| 18 | WSF22 | WSF250G-1516 | WASHER SQUARE FLAT 2-1/2 X 2-1/2" 15/16" HOLE HDG 1/4" THICKNESS (WSF22) | 2-1/2 | 2-1/2 | 15/16 | 1/4 |



| THICKNESS CHART | | |
|-----------------|---------|--------------|
| FRACTION | DECIMAL | NOMENCLATURE |
| 5/64" | 0.07 | A |
| 7/64" | 0.1 | B |
| 1/8" | 0.125 | C |
| 9/64" | 0.14 | D |
| 5/32" | 0.15 | E |
| 3/16 | .1875 | F |
| 1/4" | .25 | G |
| 3/8" | .375 | H |
| 7/16" | .4375 | I |
| 1/2" | .5 | J |

- NOTES:
- HOT DIP GALVANIZED AS PER ASTM A-153
 - MATERIAL - HOT ROLLED STEEL
 - ALL MEASUREMENTS IN INCHES.

| | | | | | |
|---|--|--|--|-----------------------|--|
| THIS DRAWING CONTAINS CONFIDENTIAL INFORMATION AND IS THE EXCLUSIVE PROPERTY OF ORBIS MANUFACTURING | | | | DRAWING NUMBER | |
| | | | | WSF2C-XXXX | |
| | DRAWN MSM DATE 21-07-2022 APPROVED DMM DATE 26-07-2022 REVISION DMM R1.2 06-08-2023 | | | DESCRIPTION | |
| | | | | WASHER 2" SQUARE FLAT | |