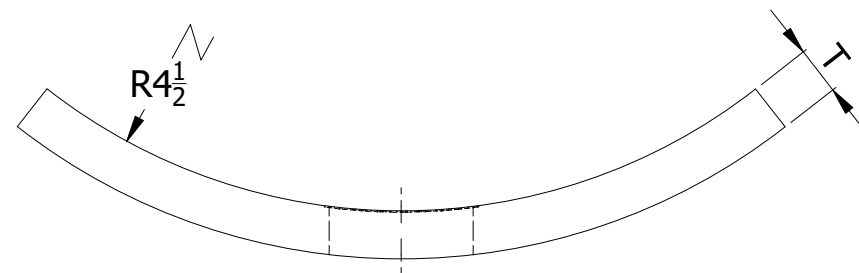
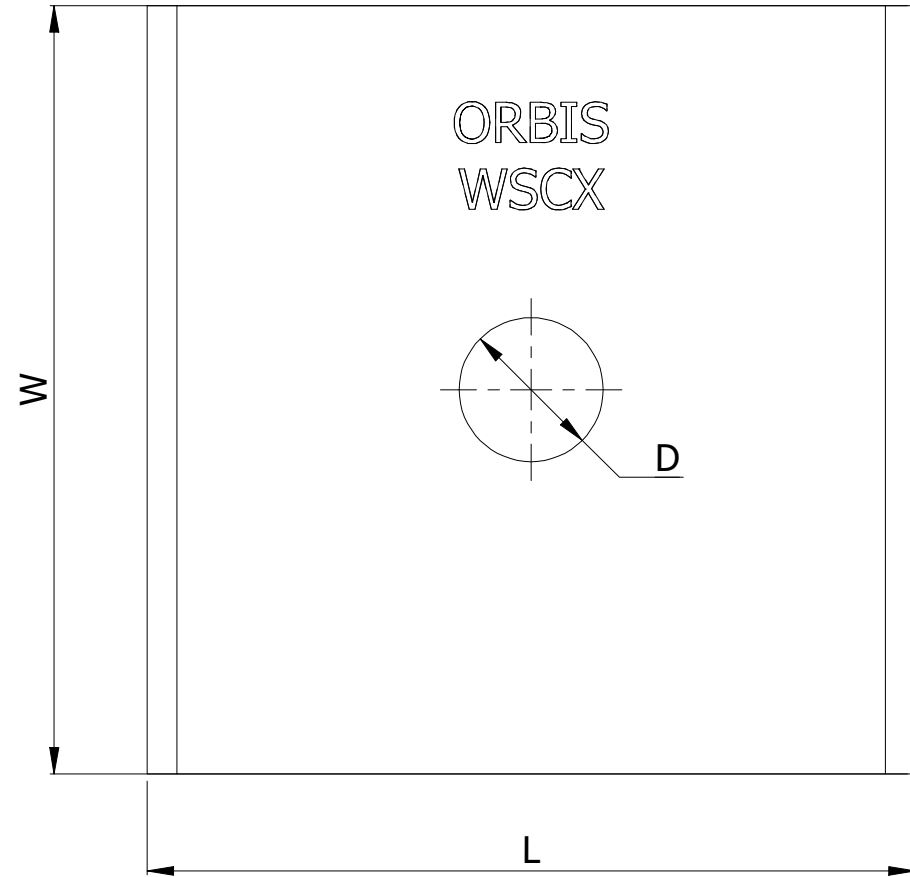


| SR NO | STAMP CODE | PART NUMBER | DESCRIPTION | L (INCH) | W (INCH) | D (INCH) | T (INCH) |
|-------|------------|-------------|---|----------|----------|----------|----------|
| 1 | WSC33 | WSC6H-118 | WASHER SQUARE CURVED 6" X 6" 1-1/8" HOLE HDG 3/8" THICKNESS (WSC33) | 6 | 6 | 1-1/8 | 3/8 |
| 2 | WSC40 | WSC6J-1316 | WASHER SQUARE CURVED 6" X 6" 13/16" HOLE HDG 1/2" THICKNESS (WSC40) | 6 | 6 | 13/16 | 1/2 |
| 3 | WSC41 | WSC6J-118 | WASHER SQUARE CURVED 6" X 6" 1-1/8" HOLE HDG 1/2" THICKNESS (WSC41) | 6 | 6 | 1-1/8 | 1/2 |



| THICKNESS CHART | | |
|-----------------|---------|--------------|
| FRACTION | DECIMAL | NOMENCLATURE |
| 5/64" | 0.07 | A |
| 7/64" | 0.1 | B |
| 1/8" | 0.125 | C |
| 9/64" | 0.14 | D |
| 5/32" | 0.15 | E |
| 3/16 | .1875 | F |
| 1/4" | .25 | G |
| 3/8" | .375 | H |
| 7/16" | .4375 | I |
| 1/2" | .5 | J |

NOTES:

- HOT DIP GALVANIZED AS PER ASTM A-153
- MATERIAL - HOT ROLLED STEEL
- ALL MEASUREMENTS IN INCHES.

THIS DRAWING
CONTAINS
CONFIDENTIAL
INFORMATION
AND IS THE
EXCLUSIVE
PROPERTY OF
ORBIS
MANUFACTURING

ORBIS

| | | | |
|----------|-----|------|------------|
| DRAWN | MSM | DATE | 21-07-2022 |
| APPROVED | DMM | DATE | 26-07-2022 |
| REVISION | - | | |

DRAWING NUMBER

WSC6X-XXXX

DESCRIPTION

WASHER 6" SQUARE CURVED