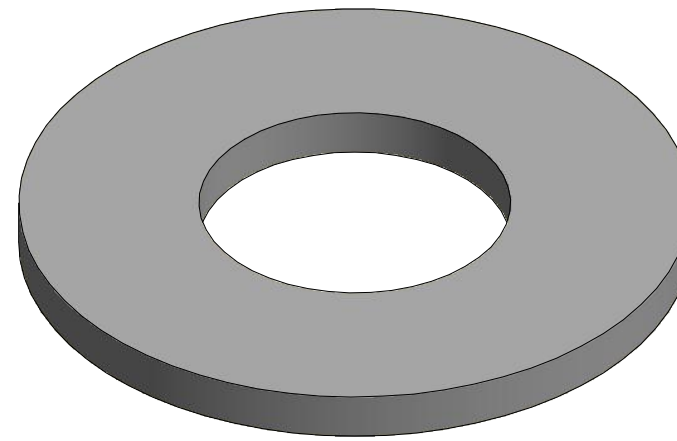
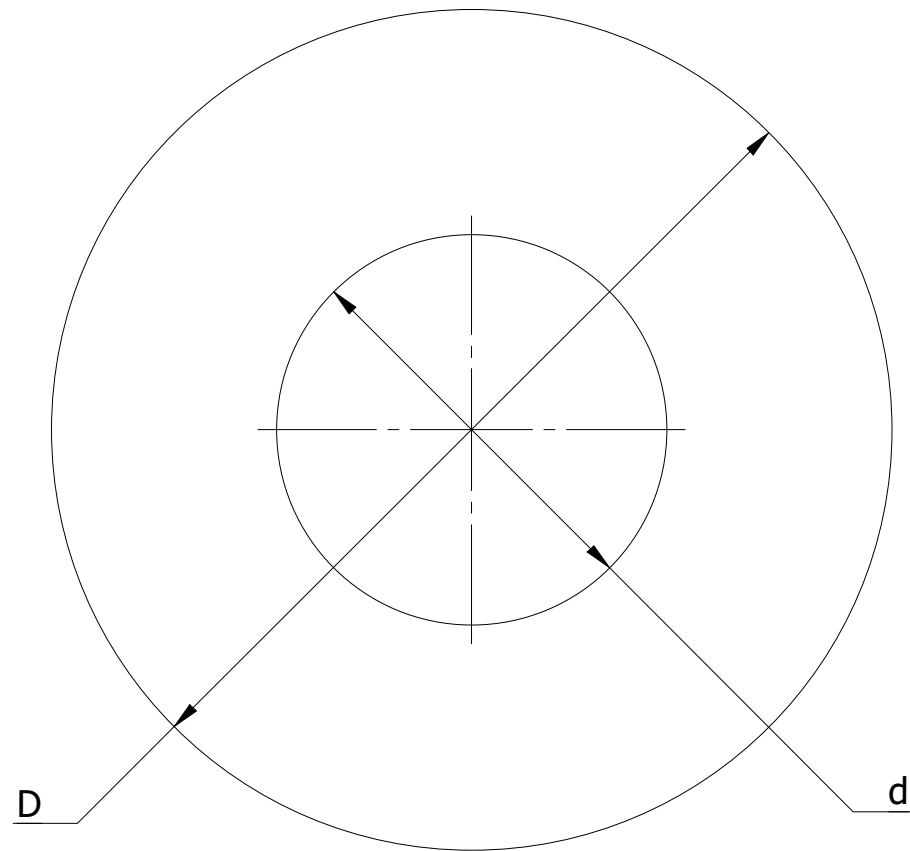


SR NO	PART NUMBER	STAMP CODE	DESCRIPTION	D (INCH)	d (INCH)	T (INCH)
1	WRF3G-1116	WRF19	WASHER ROUND FLAT 3" DIAMETER 11/16" HOLE HDG 1/4" THICKNESS (WRF19)	3	11/16	1/4
2	WRF3G-1316	WRF20	WASHER ROUND FLAT 3" DIAMETER 13/16" HOLE HDG 1/4" THICKNESS (WRF20)	3	13/16	1/4
3	WRF3G-1516	WRF21	WASHER ROUND FLAT 3" DIAMETER 15/16" HOLE HDG 1/4" THICKNESS (WRF21)	3	15/16	1/4
4	WRF3G-116	WRF22	WASHER ROUND FLAT 3" DIAMETER 1-1/16" HOLE HDG 1/4" THICKNESS (WRF22)	3	1-1/16	1/4



THICKNESS CHART		
FRACTION	DECIMAL	NOMENCLATURE
5/64"	0.07	A
7/64"	0.1	B
1/8"	0.125	C
9/64"	0.14	D
5/32"	0.15	E
3/16	.1875	F
1/4"	.25	G
3/8"	.375	H
7/16"	.4375	I
1/2"	.5	J

- NOTES:
1. HOT DIP GALVANIZED AS PER ASTM A-153
2. MATERIAL - HOT ROLLED STEEL
3. ALL MEASUREMENTS IN INCHES.:

THIS DRAWING
CONTAINS
CONFIDENTIAL
INFORMATION
AND IS THE
EXCLUSIVE
PROPERTY OF
ORBIS
MANUFACTURING

ORBIS

DRAWN	MSM	DATE	22-07-2022
APPROVED	DMM	DATE	27-07-2022
REVISION	-		

DRAWING NUMBER

WRF3XXX-XXX

DESCRIPTION

WASHER 3" ROUND FAMILY