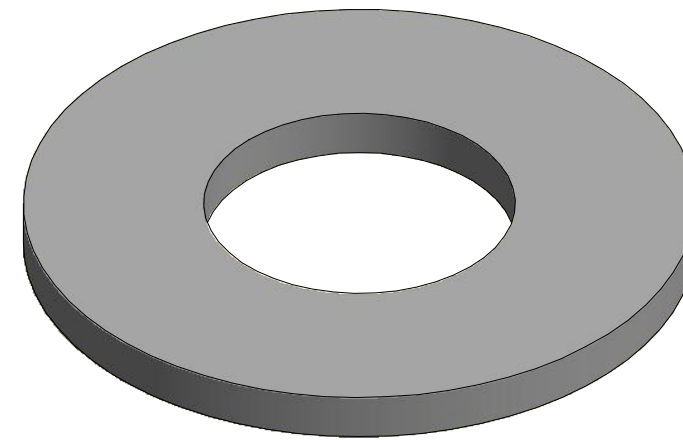
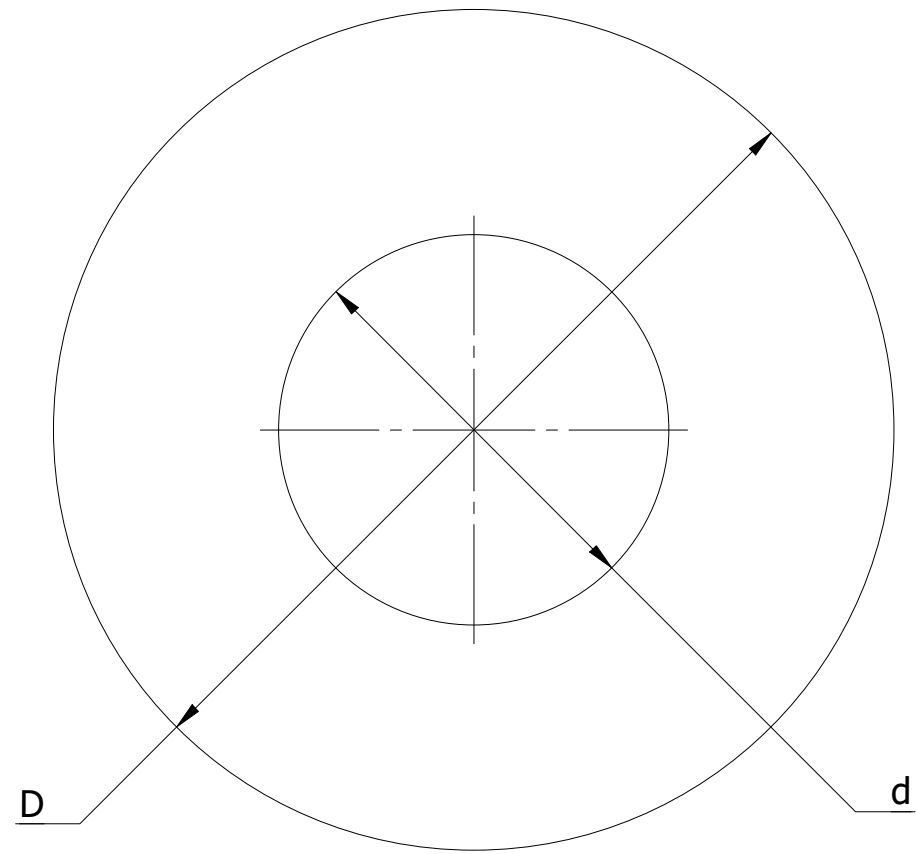


SR NO	STAMP CODE	PART NUMBER	DESCRIPTION	D (INCH)	d (INCH)	T (INCH)
1	WRF1	WRF078A-38	WASHER ROUND FLAT 7/8" DIAMETER 3/8" HOLE HDG 5/64" THICKNESS (WRF1)	7/8	3/8	5/64
2	WRF2	WRF1A-716	WASHER ROUND FLAT 1" DIAMETER 7/16" HOLE HDG 5/64" THICKNESS (WRF2)	1	7/16	5/64
3	WRF3	WRF125A-916	WASHER ROUND FLAT 1-1/4" DIAMETER 9/16" HOLE HDG 5/64" THICKNESS (WRF3)	1-1/4	9/16	5/64
4	WRF4	WRF125A-12	WASHER ROUND FLAT 1-1/4" DIAMETER 1/2" HOLE HDG 5/64" THICKNESS (WRF4)	1-1/4	1/2	5/64
5	WRF5	WRF1I-716	WASHER ROUND FLAT 1" DIAMETER 7/16" HOLE HDG 7/16" THICKNESS (WRF5)	1	7/16	7/16
6	WRF9	WRF138C-916	WASHER ROUND FLAT 1-3/8" DIAMETER 9/16" HOLE HDG 1/8" THICKNESS (WRF9)	1-3/8	9/16	1/8
7	WRF10	WRF150C-916	WASHER ROUND FLAT 1-1/2" DIAMETER 9/16" HOLE HDG 1/8" THICKNESS (WRF10)	1-1/2	9/16	1/8
8	WRF11	WRF175C-34	WASHER ROUND FLAT 1-3/4" DIAMETER 3/4" HOLE HDG 1/8" THICKNESS (WRF11)	1-3/4	3/4	1/8
9	WRF12	WRF175C-1116	WASHER ROUND FLAT 1-3/4" DIAMETER 11/16" HOLE HDG 1/8" THICKNESS (WRF12)	1-3/4	11/16	1/8



THICKNESS CHART		
FRACTION	DECIMAL	NOMENCLATURE
5/64"	0.07	A
7/64"	0.1	B
1/8"	0.125	C
9/64"	0.14	D
5/32"	0.15	E
3/16	.1875	F
1/4"	.25	G
3/8"	.375	H
7/16"	.4375	I
1/2"	.5	J

- NOTES:
- HOT DIP GALVANIZED AS PER ASTM A-153
 - MATERIAL - HOT ROLLED STEEL
 - ALL MEASUREMENTS IN INCHES.

THIS DRAWING CONTAINS CONFIDENTIAL INFORMATION AND IS THE EXCLUSIVE PROPERTY OF ORBIS MANUFACTURING

ORBIS

DRAWN	MSM	DATE	22-07-2022
APPROVED	DMM	DATE	27-07-2022
REVISION	-		

DRAWING NUMBER

WRF1XXX-XXX

DESCRIPTION

WASHER 1" ROUND FAMILY