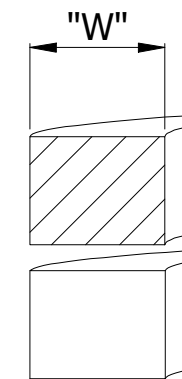
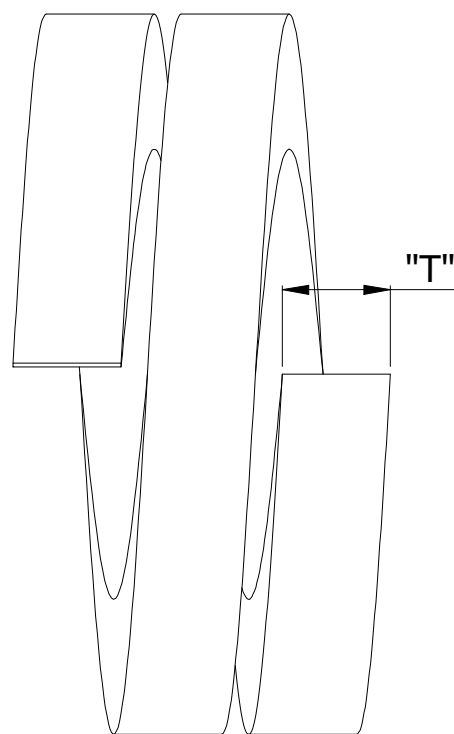
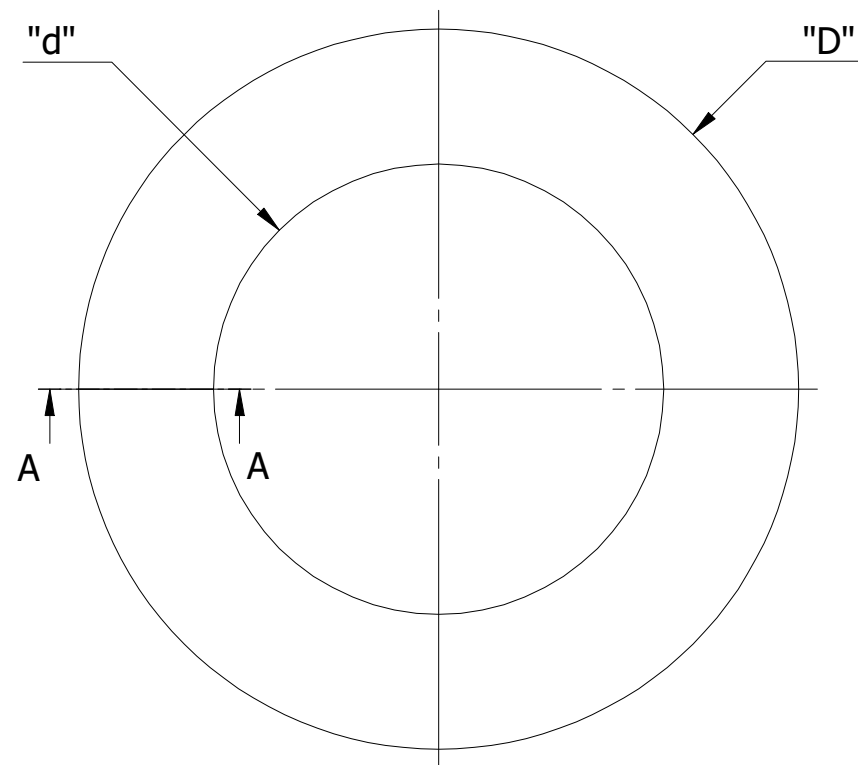
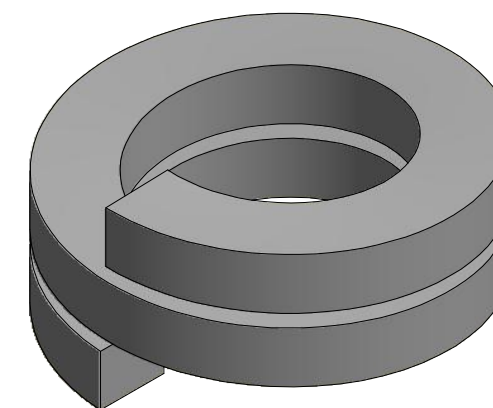


SR NO	PART NUMBER	DESCRIPTION	d (INCH)	D (INCH)	T (INCH)	W (INCH)
1	WDCL12	LOCK WASHER DOUBLE COIL 1/2" GALVANIZED	16/32	7/8	1/8	11/64
2	WDCL38	LOCK WASHER DOUBLE COIL 3/8" GALVANIZED	14/32	49/64	15/16	25/64
3	WDCL34	LOCK WASHER DOUBLE COIL 3/4" GALVANIZED	25/32	1-1/4	3/16	15/64
4	WDCL58	LOCK WASHER DOUBLE COIL 5/8" GALVANIZED	21/32	1	5/32	13/64
5	WDCL78	LOCK WASHER DOUBLE COIL 7/8" GALVANIZED	30/32	1-1/2	7/32	17/64



**SECTION A-A**



**NOTES:-**

- MATERIAL: STEEL ANSI C135.1
- FINISH: HOT DIPPED GALVANIZED AS PER ASTM A153

THIS DRAWING  
CONTAINS  
CONFIDENTIAL  
INFORMATION  
AND IS THE  
EXCLUSIVE  
PROPERTY OF  
ORBIS  
MANUFACTURING



DRAWN	MSM	DATE	10-11-2022
APPROVED	DMM	DATE	11-11-2022
REVISION	1.2		

**DRAWING NUMBER**

WDCLXX

**DESCRIPTION**

GALVANIZED DOUBLE COIL LOCK WASHER