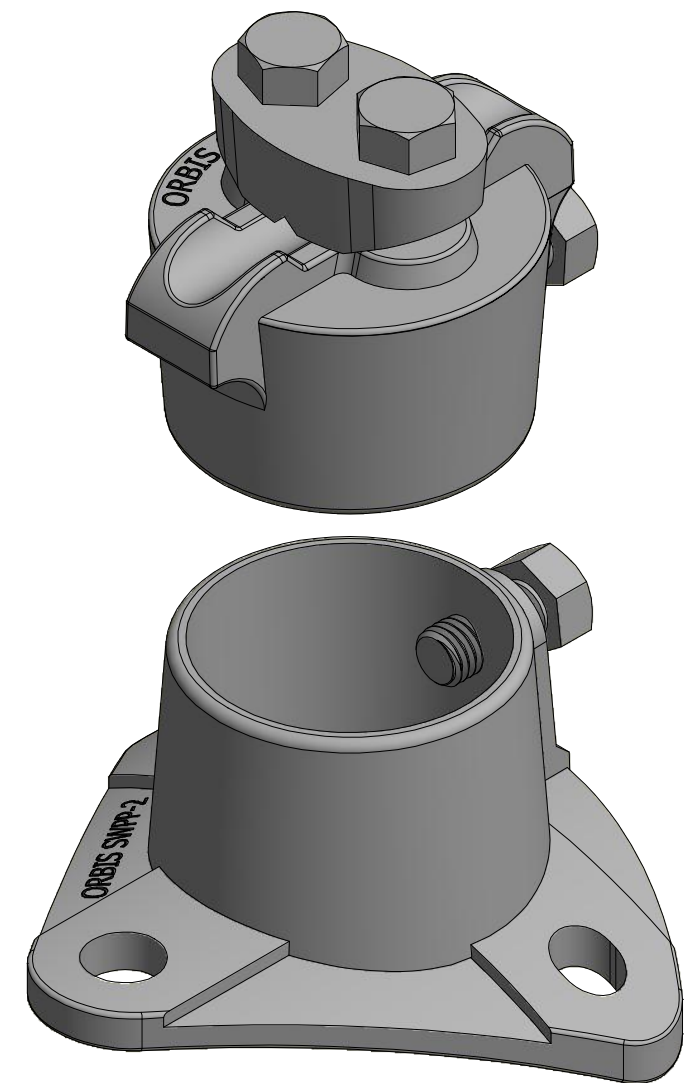
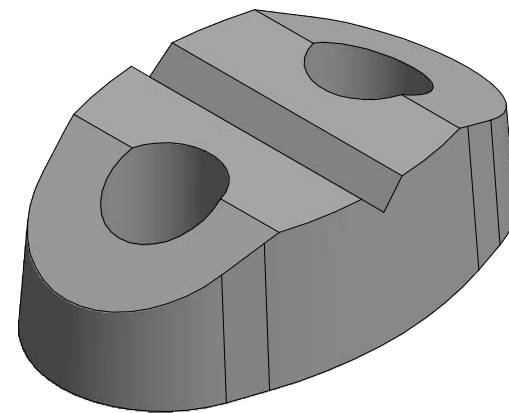
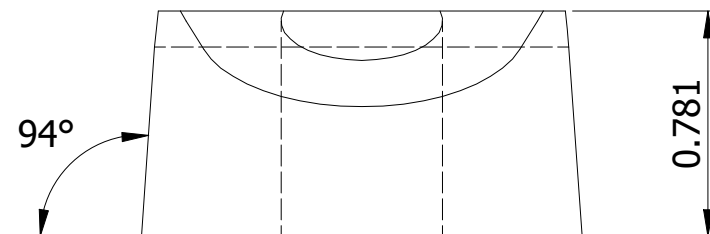
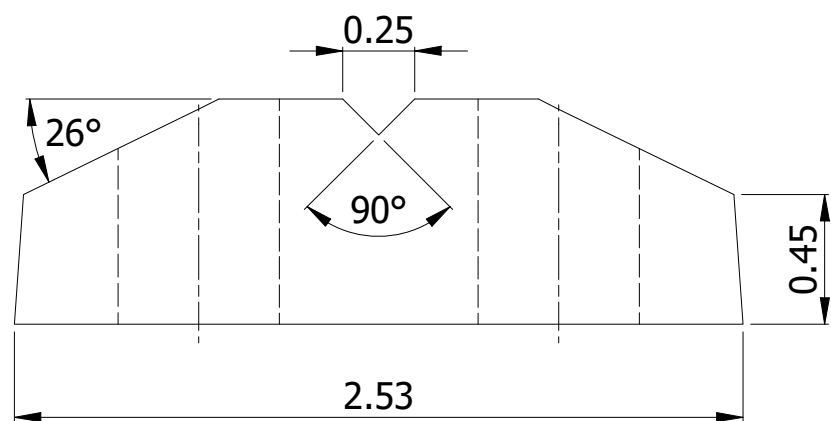
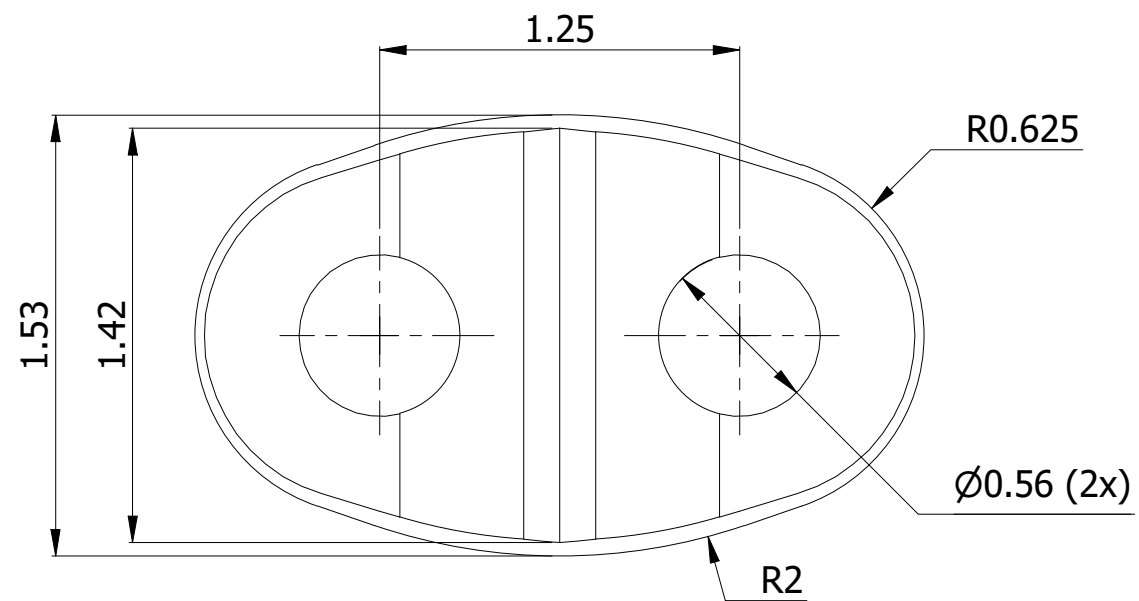


NOTES:
 MATERIAL: DUCTILE IRON AS PER ASTM A536
 ALL EDGES SHALL BE SLIGHTLY ROUNDED

THIS DRAWING CONTAINS CONFIDENTIAL INFORMATION AND IS THE EXCLUSIVE PROPERTY OF ORBIS MANUFACTURING					DRAWING NUMBER	
					SWPP-2	
					DESCRIPTION	
DRAWN	MSM	DATE	29-07-2022	SIDEWALK GUY POLE PLATE CURVED BASE FOR 2" PIPE		
APPROVED	DMM	DATE	05-10-2022			
REVISION	-					



THIS DRAWING
CONTAINS
CONFIDENTIAL
INFORMATION
AND IS THE
EXCLUSIVE
PROPERTY OF
ORBIS
MANUFACTURING



DRAWN	MSM	DATE	29-07-2022
APPROVED	DMM	DATE	05-08-2022
REVISION	-		

DRAWING NUMBER

SWEF PLATE

DESCRIPTION

SIDEWALK GUY POLE PLATE CURVED BASE
FOR 2" PIPE