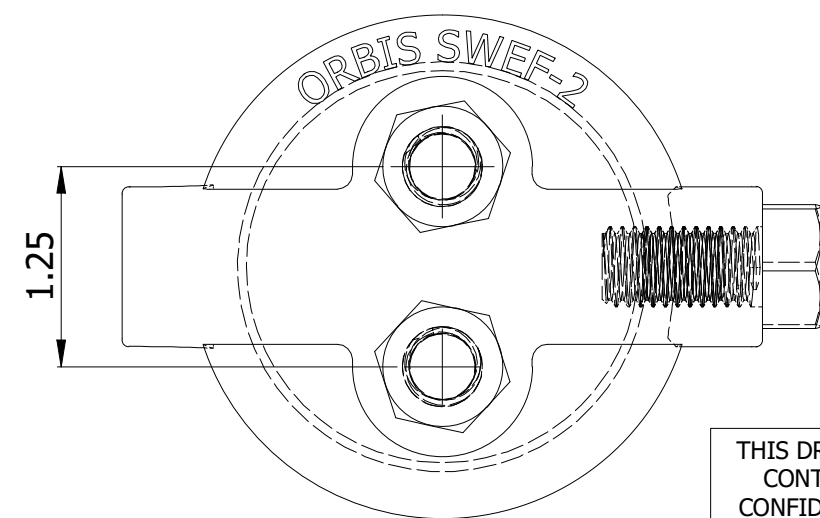
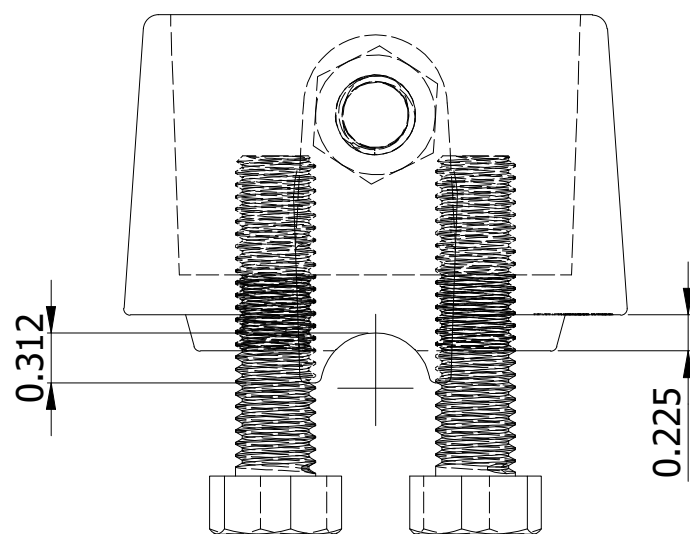
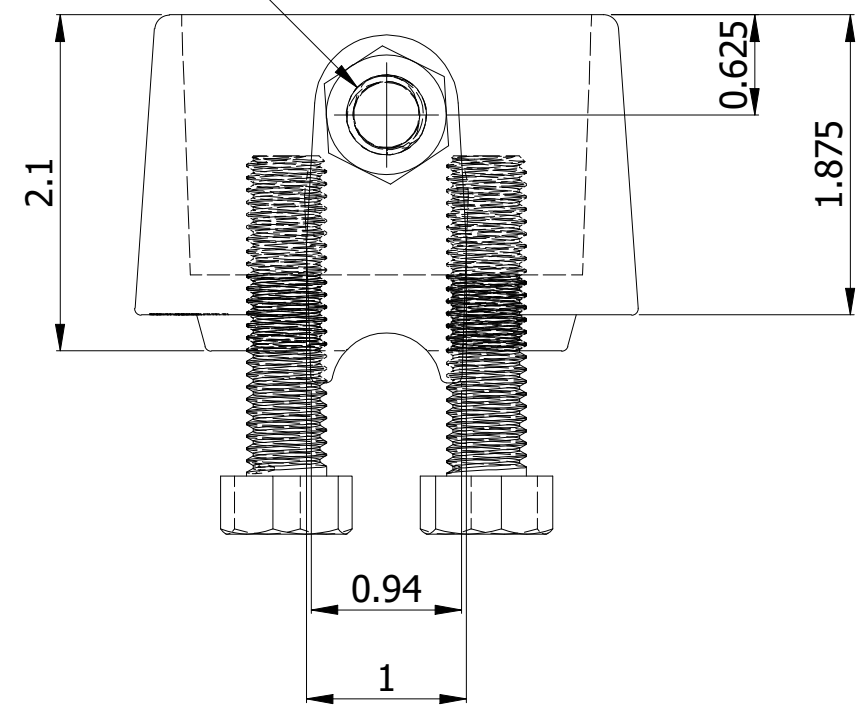
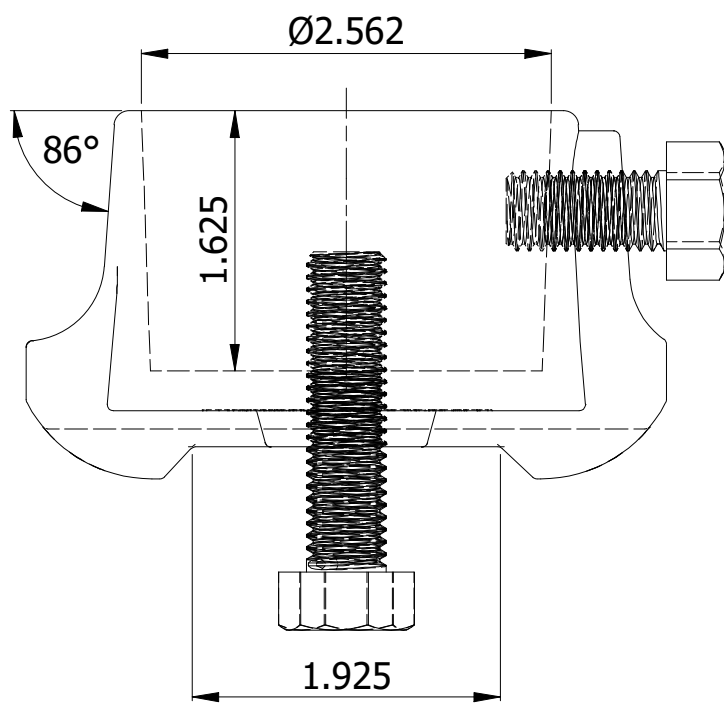


1/2-13 UNC
(TAP 0.021" OVERSIZE
AFTER COATING) 3x



NOTES:
MATERIAL: DUCTILE IRON AS PER ASTM A536
ALL EDGES SHALL BE SLIGHTLY ROUNDED.

THIS DRAWING
CONTAINS
CONFIDENTIAL
INFORMATION
AND IS THE
EXCLUSIVE
PROPERTY OF
ORBIS
MANUFACTURING

ORBIS

DRAWN	MSM	DATE	29-07-2022
APPROVED	DMM	DATE	05-08-2022
REVISION	-		

DRAWING NUMBER

SWEF-2

DESCRIPTION

SIDEWALK GUY END FITTING FOR 2" PIPE