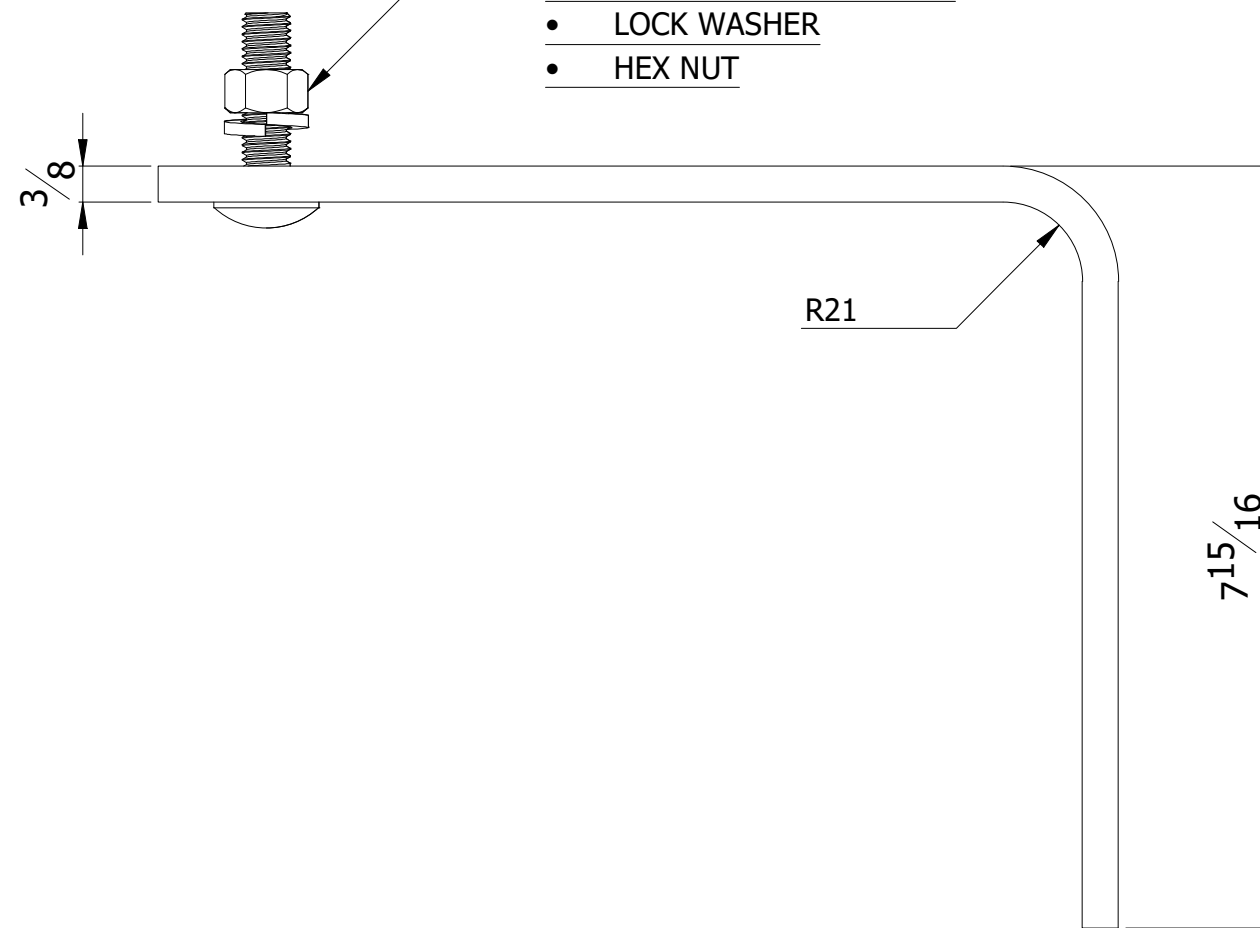
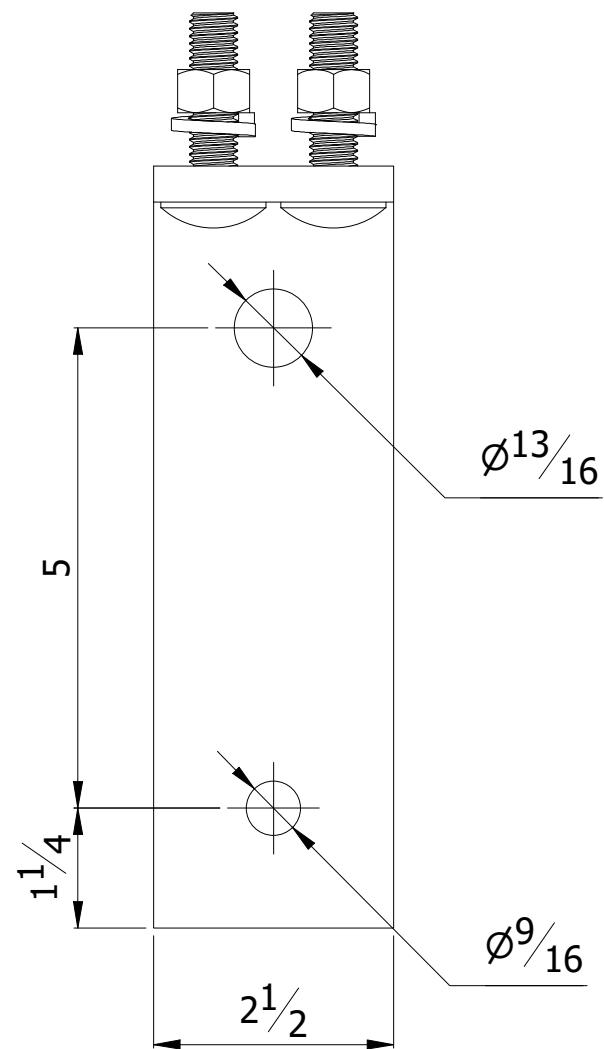


CARRIAGE BOLT SIZE 1/2"x2"
2 NO. GALVANIZED CARRIAGE BOLT
ASSEMBLY EACH INCLUDES,

- CARRIAGE BOLT 1/2"x2"
- LOCK WASHER
- HEX NUT



NOTES:
MATERIAL: STEEL
FINISH: HOT DIP GALVANIZED TO ASTM-153
TOLERANCE: ±5% FOR ALL DIMENSIONS.

THIS DRAWING
CONTAINS
CONFIDENTIAL
INFORMATION
AND IS THE
EXCLUSIVE
PROPERTY OF
ORBIS
MANUFACTURING

ORBIS

DRAWING NUMBER

PMLB810

DESCRIPTION

POLE MOUNTING L BRACKET 8"H x 10"D x
2.5"W C/W TWO 1/2" x 2" BOLTS/ NUTS/LW

DRAWN	MSM	DATE	23-03-2023
APPROVED	DMM	DATE	24-03-2023
REVISION	R2		