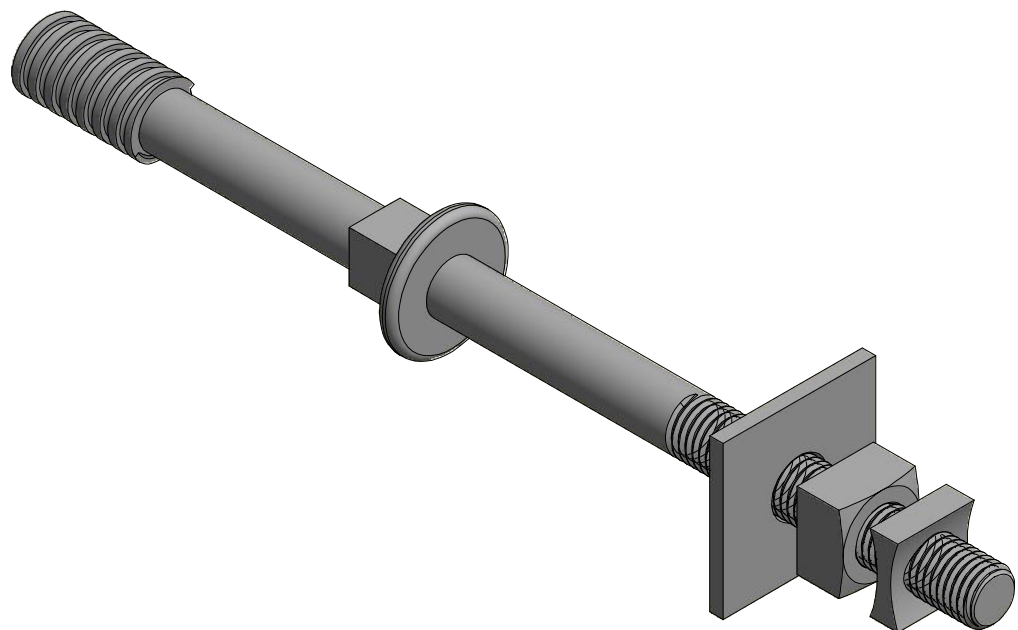
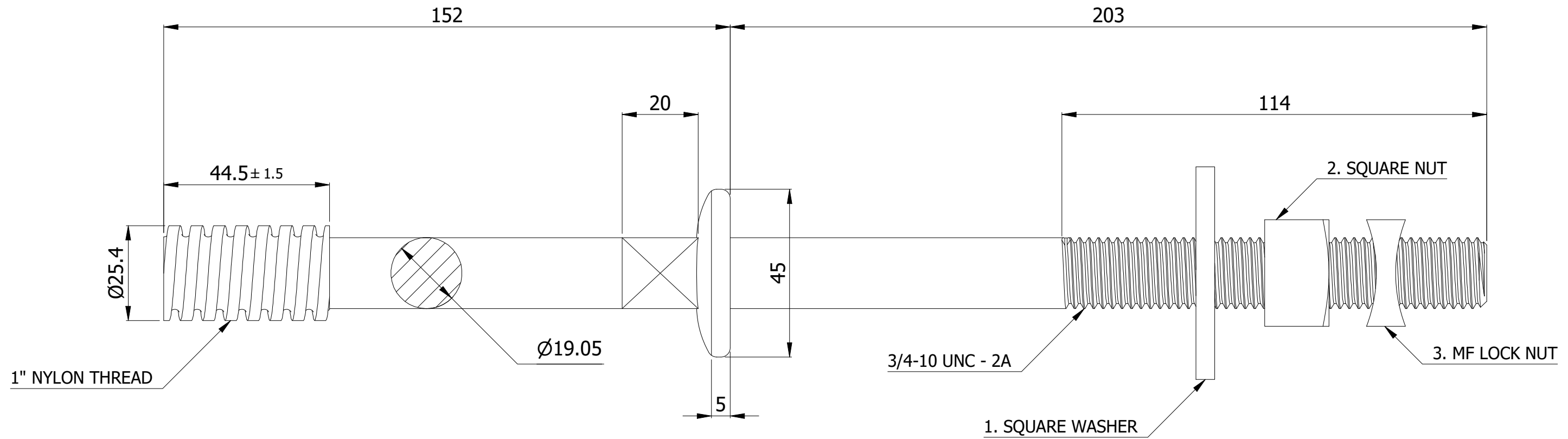


POS	PART NUMBER	DESCRIPTION
1	WSF225F-1316	WASHER SQ. FLAT 2-1/4"x2-1/4" 3/16" THICK
2	BNS34	3/4" SQUARE NUT
3	BNC34	3/4" CONCAVE MF NT



- NOTES:
1. ALL DIMENSIONS IN MM EXCEPT WHERE INDICATED.
 2. MATERIAL:
BODY: STEEL
TIP: SEMI CONDUCTIVE NYLON
 3. HOT DIP GALVANIZED AS PER ASTM A153.

THIS DRAWING
CONTAINS
CONFIDENTIAL
INFORMATION
AND IS THE
EXCLUSIVE
PROPERTY OF
ORBIS
MANUFACTURING

ORBIS			
DRAWN	MSM	DATE	27-07-2022
APPROVED	DMM	DATE	03-08-2022
REVISION	R1.1	DATE	13-09-2023

DRAWING NUMBER
CAP0104
DESCRIPTION
CROSSARM PIN 3/4"D 8"L SHANK 6"L TOP 1" NYLON THREAD