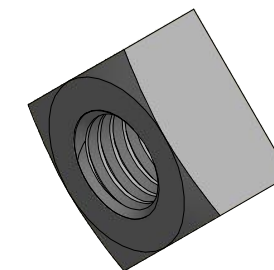
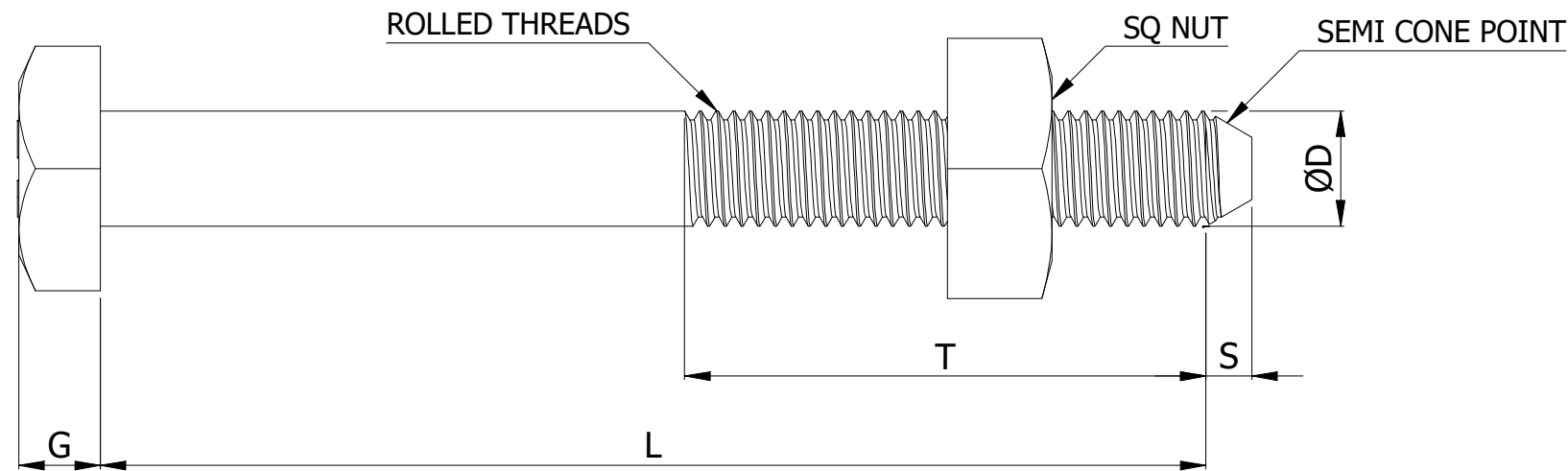
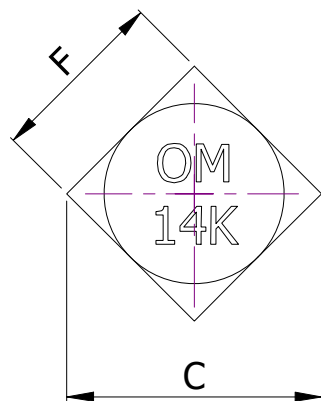


SR NO	PART NUMBER	DESCRIPTION	L (INCH)	D (INCH)	T (INCH)	S (INCH)
1	BM5805	BOLT MACHINE 5/8" X 5" HDG SQUARE HEAD & NUT	5	5/8	3	1/4
2	BM5806	BOLT MACHINE 5/8" X 6" HDG SQUARE HEAD & NUT	6	5/8	3	1/4
3	BM5807	BOLT MACHINE 5/8" X 7" HDG SQUARE HEAD & NUT	7	5/8	3	1/4
4	BM5808	BOLT MACHINE 5/8" X 8" HDG SQUARE HEAD & NUT	8	5/8	3	1/4
5	BM5810	BOLT MACHINE 5/8" X 10" HDG SQUARE HEAD & NUT	10	5/8	6	1/4
6	BM5812	BOLT MACHINE 5/8" X 12" HDG SQUARE HEAD & NUT	12	5/8	6	1/4
7	BM5814	BOLT MACHINE 5/8" X 14" HDG SQUARE HEAD & NUT	14	5/8	6	1/4
8	BM5816	BOLT MACHINE 5/8" X 16" HDG SQUARE HEAD & NUT	16	5/8	6	1/4
9	BM5818	BOLT MACHINE 5/8" X 18" HDG SQUARE HEAD & NUT	18	5/8	6	1/4
10	BM5820	BOLT MACHINE 5/8" X 20" HDG SQUARE HEAD & NUT	20	5/8	6	1/4
11	BM5822	BOLT MACHINE 5/8" X 22" HDG SQUARE HEAD & NUT	22	5/8	6	1/4
12	BM5824	BOLT MACHINE 5/8" X 24" HDG SQUARE HEAD & NUT	24	5/8	6	1/4
13	BM5826	BOLT MACHINE 5/8" X 26" HDG SQUARE HEAD & NUT	26	5/8	6	1/4
14	BM5828	BOLT MACHINE 5/8" X 28" HDG SQUARE HEAD & NUT	28	5/8	6	1/4

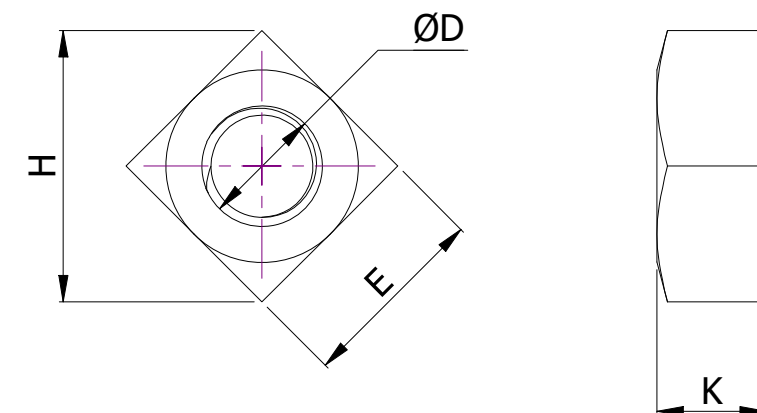


SQUARE BOLT HEAD DIMENSIONS

BOLT	-	F	-	C	C	-	G	-
SIZE	NOM.	MIN.	MAX.	MIN.	MAX.	NOM.	MIN.	MAX.
5/8"	15/16"	0.906"	0.938"	1.244"	1.326"	27/64"	0.4"	0.444"

SQUARE NUT DIMENSIONS

NUT	-	E	-	H	H	-	K	-
SIZE	NOM.	MIN.	MAX.	MIN.	MAX.	NOM.	MIN.	MAX.
5/8"	1"	0.969"	1"	1.3"	1.414"	35/64"	0.525"	0.569"



NOTES:
 MATERIAL: STEEL.
 MINIMUM TENSILE STRENGTH : 14,100 LBS.
 DIMENSIONS : BOLT - ANSI C 135.1,
 SQ. NUT - ANSI B.18.2.2 & ANSI C 135.1
 THREADS : 5/8" - 11 UNC CLASS 2A.
 FINISH : HOT DIP GALVANIZED AS PER ASTM A153.

THIS DRAWING
 CONTAINS
 CONFIDENTIAL
 INFORMATION
 AND IS THE
 EXCLUSIVE
 PROPERTY OF
 ORBIS
 MANUFACTURING



DRAWN	MSM	DATE	26-07-2022
APPROVED	DMM	DATE	02-08-2022
REVISION	1.1		

DRAWING NUMBER

BM58XX

DESCRIPTION

BOLT MACHINE 5/8" X L" HDG
 SQUARE HEAD & NUT